

2026 SPRING CONFERENCE

# CONNECTING SYSTEMS, COORDINATING CARE, IMPROVING LIVES.

CONFERENCE BROCHURE

June 9-10, 2026

Raleigh, NC | Hilton Raleigh North Hills Hotel



CENTER *for*  
INTEGRATIVE  
HEALTH



# PROGRAM AT A GLANCE!

## TUESDAY, JUNE 9

6:30 - 9:30 a.m.

**Complimentary Breakfast Buffet for Hilton Raleigh Hotel Guests – 88 Oaks Restaurant (Lobby)**

*Sponsored by Alexander Youth Network, Amivie, Carolina Complete Health, CCR Consulting, Citizens Insurance Agency, Collaborative Health Network, Community Alternatives of NC ResCare, Eleos Health, GHA Autism Supports, Healthy Blue NC, IntellectAbility, Medisked - a CaseWorthy Company, Monarch, NextGen Healthcare, Orbit Billing, RHA Health Services, Risk Strategies, Skill Creation, Streamline Healthcare Solutions, United Healthcare*

9:00 - 10:00 a.m.

**Opening Plenary**

**Connecting and Strengthening the Mental Health and Criminal Justice Systems for North Carolinians**

10:00 a.m. - 10:30 a.m.

**Break/Visit Exhibitors**

*Sponsored by ContinuumCloud, Easterseals PORT Health, Eleos Health, North Carolina Association of Public Community Health Plans, Voices Together*

10:30 a.m. - 12:00 p.m.

**Concurrent Sessions**

- AI - Enabled Automation that Supports Clinical Excellence
- Medicaid Policy Strategies to Strengthen and Expand Your Workforce
- State, Regional and Local Collaborations Creating Predictability and Continuity for 1915(i) Option Stakeholders
- Digital Detection, Human Connection: A Health System's Approach to Suicide Risk Screening
- Peer Operated Crisis Settings and Access Support: What the Data Tells Us
- Federal and State updates to Controlled Substances Regulations and Supporting Technology

12:00 p.m. - 1:30 p.m.

**Luncheon**

*Sponsored by Alexander Youth Network, AmeriHealth Caritas North Carolina, Amivie, Carolina Complete Health, CCR Consulting, Citizens Insurance Agency, Collaborative Health Network, Community Alternatives of NC ResCare, Eleos Health, Element Health Consortium, GHA Autism Supports, Healthy Blue NC, IntellectAbility, Medisked - a CaseWorthy Company, Molina Healthcare, Monarch, NextGen Healthcare, Orbit Billing, Professional Healthcare Solutions Inc., RHA Health Services, Risk Strategies, Skill Creation, SPARC Services and Programs, Streamline Healthcare Solutions, United Healthcare*

12:00 p.m. - 1:00 p.m.

**Lived Experiences Collaborative: Stories to Solutions**

1:00 p.m. - 1:30 p.m.

**Lunch and Learn**

1:30 p.m. - 2:30 p.m.  
**Sparking Innovation**

- Understanding the Policy Priorities of Tailored Plans in 2026
- Building the Leadership & Culture Backbone: How to Aligned Your Management Team Across Systems
- AdvaNcE Health Together: Strengthening Health Through Collaboration
- I/DD Peer Mentor Training Program: Purpose, Planning, and Outcome
- Evolution and the Integrated Therapeutic Community Model for Co-Occurring Treatment
- Building Early Behavioral Health Supports in Early Childhood Settings

2:30 - 3:00 p.m..

**Break/Visit Exhibitors**

*Sponsored by ContinuumCloud, Easterseals PORT Health, Eleos Health, North Carolina Association of Public Community Health Plans, Voices Together*

3:00 p.m. - 4:00 p.m.

**Sparking Innovation**

- Advancing Early Psychosis Treatment: Building Effective FEP Programs within Integrated Health Setting
- The Science Behind Workforce Agility and Resilience—and How Leaders Can Put It into Practice
- Family-Led, Clinician-Supported: Using Technology and Community Supports to Improve Behavioral Health Outcomes for Children While Reducing System Strain
- Rooted in Community: Civic Power as a Path to Better Disability Outcomes
- Using Core Values to Inform True Whole Person Care: Talk About Value Add!
- Professionalizing Placement: Impact and Outcomes of the Treatment Parent Specialist Model

4:00 - 4:30 p.m..

**Break/Visit Exhibitors**

*Sponsored by ContinuumCloud, Easterseals PORT Health, Eleos Health, North Carolina Association of Public Community Health Plans, Voices Together*

4:30 p.m. - 5:30 p.m.

**General Session**

**North Carolina's Strategic Response to HR1**

5:30 p.m.

**Adjourn**

## WEDNESDAY, JUNE 10

6:30 - 9:30 a.m.

**Complimentary Breakfast Buffet for Hilton Raleigh Hotel Guests – 88 Oaks Restaurant (Lobby)**

*Sponsored by Alexander Youth Network, Amivie, Carolina Complete Health, CCR Consulting, Citizens Insurance Agency, Collaborative Health Network, Community Alternatives of NC ResCare, Eleos Health, GHA Autism Supports, Healthy Blue NC, IntellectAbility, Medisked - a CaseWorthy Company, Monarch, NextGen Healthcare, Orbit Billing, RHA Health Services, Risk Strategies, Skill Creation, Streamline Healthcare Solutions, United Healthcare*

9:30 a.m. - 11:00 a.m.

**Concurrent Sessions**

- Leading in Uncertain Times: Organizational Challenges and Opportunities Under HR1 (OBBBA) and Other Funding Variables
- Effective Leadership Development: A Practical Guide for a Remote Workforce
- From Launch to Scale: Operationalizing Tailored Care Management in North Carolina
- Connected Care: Leveraging People, Partnerships, and Technology in Behavioral Health
- Beyond Behavioral Health: Strengthening ACTT Through PCS Integration and Whole Person Care
- Reimagining the Waitlist
- The NCMedHelp Project: Helping Medicaid Beneficiaries

11:00 - 11:30 a.m.

**Break**

*Sponsored by ContinuumCloud, Easterseals PORT Health, Eleos Health, North Carolina Association of Public Community Health Plans and Voices Together*

11:30 a.m. - 12:30 p.m.

**Closing Plenary**

**Looking Ahead – Aligning Around What's Next**

12:30 - 1:30 p.m.

**Celebration Reception**

# THANK YOU TO OUR CONFERENCE SPONSORS!

## PLATINUM SPONSORS



## GOLD SPONSORS



## SILVER SPONSORS





# Say hello to the system of action for *community-based care*

While other AI tools document what happened, Eleos acts in the moment – completing documentation, compliance, and eligibility workflows as care is delivered.



**Find out  
how!**





2026 SPRING CONFERENCE  
**CONNECTING SYSTEMS,  
COORDINATING CARE,  
IMPROVING LIVES.**

JUNE 9-10, 2026

### WHY ATTEND

Delivering truly integrated care for North Carolina's MH/I/DD/SUS population depends greatly on **Connecting Systems** and **Coordinating Care** to achieve the ultimate goal of **Improving Lives**. While ongoing political and policy change creates uncertainty, staying informed and adaptable—while remaining grounded in your mission and values—is key to success.

The i2i Center's Spring Conference will equip you with essential state and national policy updates to help you stay responsive to your workforce and the individuals you serve in an evolving environment. The event also offers valuable opportunities to learn from experienced professionals on proven strategies. You will also have the chance to explore innovative technologies that enhance services and reduce administrative burden, while discovering more effective ways to connect with those utilizing your services.

### ONLINE NETWORKING ADVANTAGE!

This conference will offer the easy-to-use mobile APP and web platform from **Whova**. Whova provides attendees an enhanced networking experience with many opportunities to **connect, share and access information** through:



- **Direct Messaging** before, during and after the conference
- **Create**, host and post online and in person Meetings and Meet Ups
- **Start Discussions** on Topics of Interest
- **Connect** with Exhibitors, Attendees and Speakers
- **Access** to All Session Materials, Agenda and Power Points
- **Extend Session Q&A with Speakers** - forgot to ask a question? Post your question after session ends!
- **Share & Post** - Job Openings, Upcoming Events, Articles, Links and Photos
- **3 Month Access** - forgot to download a power point, want to watch a virtual session? No problem, you have up to 3 months to access the platform! You can continue to **Message** Participants, **Post Information, Review** Session Materials, **Watch Virtual Sessions** and **Talk to Speakers and Exhibitors**

### CONTINUING EDUCATION CREDIT FOR THIS CONFERENCE IS BEING PROVIDED BY:

**SOUTHERN REGIONAL AHEC**  
PART OF NC AHEC

**June 9-10th Conference - Earn up to 8 Hours of Continuing Education Credits**

**Contact hours:** Up to **8** hours for behavioral health professionals, social workers and other healthcare disciplines.

**Substance Abuse:** Up to **8** hours for substance abuse credit will be awarded to participants who attend 100% of the program. Southern Regional AHEC adheres to NCASPPB Education Provider Guidelines. (pending approval)

\*\*This program **does not** provide specific NBCC Credits. However, per LPC licensure guidelines, you may submit up to **8** contact hours of continuing education by attending programs by affiliates of the National Area Health Education Center Education (NAO). SR-AHEC is a member of the NAO.

**Those seeking Peer Support Specialist Recertification:** can earn Up to **8 Contact Hours** toward their Professional Development training related to health, mental health, and substance use.

\*SR-AHEC cannot process requests for CEUs after the deadline of **June 25, 2026**.

**After June 26th, a \$20 late fee will be charged.**

Trillium Health Resources Offers



Trillium Health Resources Offers



Community-Driven Care, Powered By Local Solutions

Trillium's THRive Local is our county-level plan designed to bring more resources, more support, and more impact to the communities we serve.

By investing directly in local partnerships, providers, and community organizations, THRive Local strengthens the foundations of community health.

We connect physical, behavioral, and social supports so members can thrive in every part of life, not just in care settings, but at home, at work, and in their neighborhoods.

With smart, locally driven solutions, we make care more personal, more connected, and more effective for every member.

### How can you engage with THRive Local?

- Help spread awareness about crisis services and support programs.
- Attend free trainings like Mental Health First Aid.
- Give us feedback on any gaps in local services.

### Innovation with Purpose



### Community First



### Whole-Person Care



### Trusted and Accessible



Visit [TrilliumHealthResources.org/THRivelocal](https://TrilliumHealthResources.org/THRivelocal) to learn more and connect!

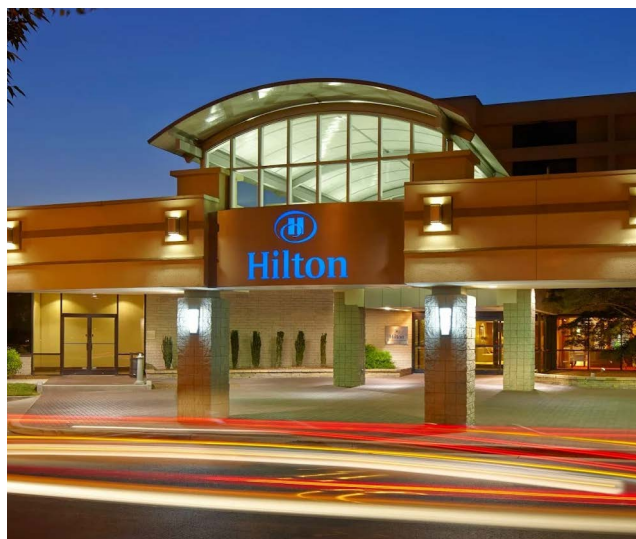
# CONFERENCE HOTEL

## HILTON RALEIGH NORTH HILLS

i2i will again host the conference at the Hilton Raleigh North Hills Hotel in Raleigh, NC. Attendees receive a **special discount rate of \$159** for a single or double occupancy. **The room block is ONLY** available through **May 18, 2026**, so act quickly.

You can make [HOTEL RESERVATIONS ONLINE](#). **When making online reservations, be sure to double check your reservation dates and click edit dates if needed.** You may also make reservations by calling (919)-872-2323. **When calling, please be sure to reference our conference code [i2i26](#) to get the discounted rate.**

The address of the Hilton Raleigh North Hills Hotel is [3415 Wake Forest Road, Raleigh, NC 27609-7330](#).



## NEW - FREE HOTEL GUEST BREAKFAST BUFFET

New this year, hotel guests at the **Hilton Raleigh North Hills** hotel will be offered a free breakfast buffet in the 88 Oaks Restaurant from 6:30-9:30 a.m.

Those not staying overnight at the hotel, but attending the conference, may purchase the breakfast buffet at a **20% discount** by showing your i2i conference badge to the hostess.

### Breakfast is being sponsored by

*Alexander Youth Network, Amivie, Carolina Complete Health, CCR Consulting, Citizens Insurance Agency, Collaborative Health Network, Community Alternatives of NC ResCare, GHA Autism Supports, Eleos Health, Healthy Blue NC, IntellectAbility, Medisked - a CaseWorthy Company, Monarch, NextGen Healthcare, Orbit Billing, RHA Health Services, Risk Strategies, Skill Creation, Streamline Healthcare Solutions, United Healthcare*





# Programs That Matter.

We keep people out of institutional care by providing support rooted in strong values and genuine compassion.

- ✓ For families needing a different approach
- ✓ Mobile—we come to you
- ✓ Fast response—face-to-face meetings within 2 days
- ✓ Crisis-ready—we work with families in immediate need
- ✓ Evidence-based and trauma-informed care
- ✓ Collaborative approach with all stakeholders
- ✓ Customizable programs to meet your needs
- ✓ Value-based contracts available
- ✓ CARF-accredited
- ✓ Serving Arkansas, North Carolina, and Virginia



**Get Started Today!**

☎ 866-700-1606    ✉ [sparcreferrals@thesparcnetwork.net](mailto:sparcreferrals@thesparcnetwork.net)

🌐 [www.sparcprograms.net](http://www.sparcprograms.net)    **Referral Code: 5152**

SCAN ME



# CONFERENCE EXPO JUNE 9TH

**Looking to stay competitive in a fast-moving environment?** As change continues, having the right tools and partners matters more than ever. Join us on **June 9th** for our Conference Expo, where more than 60 exhibitors will showcase the latest technologies, services, and business solutions to help move your organization forward. Don't miss this opportunity to discover new resources that can strengthen and support your mission.

To view the **Exhibitors and Sponsors** that will be onsite to offer you services, information and support at this year's conference, [CLICK HERE.](#)

To participate as an exhibitor, you can [sign up online](#) or email Jean Overstreet at [jean@i2icenter.org](mailto:jean@i2icenter.org) with any questions.



## SUPPORTING FAMILIES. STRENGTHENING CONNECTIONS.

For over **56 years**, TLC has partnered with individuals and families navigating intellectual and developmental disabilities.

Finding the right support shouldn't feel overwhelming. TLC is here to help you navigate services, access resources, and build meaningful connections.



### Introducing TLC Family Connect

A free resource designed to help families find answers, support, and community.

Through Tailored Care Management and TLC Family Connect, we offer:

- One-on-one guidance tailored to your needs
- Community Table gatherings to connect and learn
- Ongoing support for individuals and families

Visit [www.nctlc.org](http://www.nctlc.org) or scan the QR code to access support and resources.



**2026 CONFERENCE REGISTRATION INFORMATION**  
**CONNECTING SYSTEMS, COORDINATING CARE,**  
**IMPROVING LIVES**

JUNE 9TH AND 10TH



**CONSUMERS & FULL  
 TIME STUDENTS RECEIVE  
 A 50% DISCOUNT ON  
 REGISTRATION FEES**

**REGISTER ONLINE - CLICK HERE.**

1. TO ACCESS THE CONFERENCE materials on the Conference APP (Whova), the name, title and email of the person **ATTENDING** the conference must be input into the online registration form - **do not use an administrative staff's email address for this.**

2. All payments for registration are to be made by credit card. There is a bill me option, but we ask this be reserved for organizations registering a large number of registrants that UNABLE TO PAY by credit card.

3. ALL Payments for registration **MUST BE RECEIVED by MAY 31st.**

4. **ONLINE REGISTRATION ENDS MAY 29th.** If space allows, i2i may offer onsite registration. An email announcement will be made.

**REGISTRATION ASSISTANCE**

If you have trouble with online registration, please email Aviance Robertson at [aviance@i2icenter.org](mailto:aviance@i2icenter.org) or call at (919) 561-7744.

**REGISTRATION DEALS**

Register 4 Staff (Full Conference) to Attend and the 5th Attends for Free! Please email Aviance Robertson at [aviance@i2icenter.org](mailto:aviance@i2icenter.org) with the name of the 5th Registrant.

**REGISTRATION FEES**

	<b>UNTIL 5/11</b>		
			<b>AFTER 5/11</b>
<b>FULL CONFERENCE</b>			
<b>ONE DAY</b>		<b>\$310</b>	
<b>NEW! ATTEND 1 SESSION</b>		<b>\$255</b>	
<i>(Attend a Concurrent, Sparking, General, Opening or Closing &amp; Visit Exhibitors. Meals not included.)</i>		<b>\$155</b>	<b>\$330</b>
<b>COMPANION RATE</b>			<b>\$270</b>
<i>(a Companion is a spouse or someone accompanying an attendee to the conference, that will participate in meals, but not attend sessions. This is not a Direct Support Professional coming to assist a registered attendee. Attendees bringing DSP, please email jean@i2icenter.org).</i>		<b>\$85</b>	<b>\$165</b>
			<b>\$85</b>

**CANCELLATION POLICY**

A 25% refund is available on registrations cancelled before May 11th. No registration refunds will be made after May 11th. To cancel, you must email [aviance@i2icenter.org](mailto:aviance@i2icenter.org) before the May 11th deadline. Registration for a staff member unable to attend may be transferred to another individual with no penalty by contacting Aviance Robertson via email [aviance@i2icenter.org](mailto:aviance@i2icenter.org).

# THANK YOU i2i FRIENDS



## Free IDD Webinar Series

- ▶ Learn from experts.
- ▶ Get practical tools.
- ▶ Walk away with free resources.



Dr. Craig Escudé  
FAAFP, FAADM, FAAIDD

Scan for more info and to register!



Together we build bridges to **hope** and **healing**.

ALEXANDER YOUTH NETWORK



At **Alexander Youth Network**, we help children overcome mental health and behavioral challenges with a comprehensive, integrated treatment approach **tailored to each child's unique needs**.

[www.AlexanderYouthNetwork.org](http://www.AlexanderYouthNetwork.org)



## SMARTER SOLUTIONS for HCBS Providers

Since 2011, we've supported North Carolina's HCBS industry by strengthening provider networks and improving care quality.

Our person-centered platform **unifies data, streamlines workflows, and aligns with NC DHHS standards** for Tailored Plans, CMAs, CINs, and providers.



**i2i FRIEND**

**2026**

Learn more at [CaseWorthy.com](http://CaseWorthy.com)



### COLLABORATING FOR IMPROVED OUTCOMES

Collaborative Health Network (CHN) is a leading, provider-owned, statewide clinically integrated network and solution partner in North Carolina. We support a broad continuum of care, including behavioral health, intellectual and developmental disabilities, primary care, and whole-person care.

CHN partners with organizations to advance integrated care, including Tailored Care Management and other community-based services, through aligned strategy, shared infrastructure, and collaborative networks. Our solutions empower providers across multiple service lines with a comprehensive care management platform, a centralized data repository, advanced analytics, interoperability solutions, and population health tools. Together, we are dedicated to **Building Healthy Lives** for North Carolinians.

**chn** COLLABORATIVE HEALTH NETWORK  
[www.collaborativehn.com](http://www.collaborativehn.com)



TUESDAY, JUNE 9, 2026

# OPENING PLENARY

9:00 A.M. - 10:00 A.M.

## Connecting and Strengthening the Mental Health and Criminal Justice Systems for North Carolinians

North Carolina is advancing a more coordinated, person-centered approach to serving individuals at the intersection of mental health and the criminal justice system. Guided by Executive Order 33, this session highlights statewide efforts to build a comprehensive treatment and rehabilitative public system that improves outcomes, reduces recidivism, and strengthens community safety.

The session will open with video remarks from Governor Josh Stein, followed by a system-level overview from Kelly Crosbie, Assistant Secretary at the North Carolina Department of Health and Human Services. Crosbie will lead a moderated panel discussion with cross-system leaders representing key initiatives across the continuum of care, including Crisis services, Law Enforcement Assisted Diversion (LEAD), Treatment Accountability for Safer Communities (TASC), Forensic Assertive Community Treatment (FACT) Teams, and the North Carolina Formerly Incarcerated Transition (NC FIT) Program. Panelists will share practical insights, implementation strategies, and lessons learned to better serve North Carolinians with complex needs.

### OBJECTIVES:

- Describe the key components of Executive Order 33 and its role in advancing a coordinated mental health and criminal justice system in North Carolina.
- Identify at least three cross-system initiatives (e.g., Crisis services, LEAD, TASC, FACT, NC FIT) and their roles in the continuum of care to support individuals involved in the criminal justice system.
- Describe the continuum of care and how coordinated approaches can improve access to care, support diversion and re-entry efforts, and promote long-term recovery and stability.
- Review and analyze opportunities for collaboration between mental health providers, law enforcement, and community organizations within their local context.

[VIEW SESSION DETAILS AND SPEAKERS](#)

### SPEAKERS



**GOVERNOR JOSH STEIN**  
Video Message



**KELLY CROSBIE**  
Assistant Secretary, NC Department of Health and Human Services



**NATASHA HOLLEY**  
Chief Executive Officer, Integrated Family Services



**MOLLIE BOLICK**  
Law Enforcement Assisted Diversion (LEAD)



**JAMIE MELVIN**  
Justice Services Director, Coastal Horizons, Treatment Accountability for Safer Communities (TASC)



**LACEY RUTHERFORD**  
Forensic Assertive Community Team (FACT)



**DR. EVAN ASHKIN**  
Professor of Family Medicine at UNC School of Medicine and Founder of North Carolina Formerly Incarcerated Transition (NC FIT)

THANK YOU i2i FRIEND



THANK YOU i2i FRIENDS



Creating Life Skills With Those We Serve.  
[www.skillcreations.com](http://www.skillcreations.com)

**Our Services:** Intermediate Care Facilities • 1915i • Day Programs • Innovations Waiver • Alternative Family Living • Emergent Need Respite • Child Development Center

**CONNECT WITH US TODAY!**

Contact an Executive Director of Admissions:

Mary Katherine Hackmann (EAST)  
[admissionseast@skillcreations.com](mailto:admissionseast@skillcreations.com); (919) 648-2772  
 Jason Lewis (WEST)  
[admissionwest@skillcreations.com](mailto:admissionwest@skillcreations.com); (828) 523-4180



**SmartCare™**  
 BEHAVIORAL HEALTH EHR

- ▶ The Most Usable EHR in Behavioral Health
- ▶ A Modern EHR Platform Trusted by Providers Since 2003
- ▶ One Unified Platform Across the Full Continuum of Care
- ▶ Clinically Driven Revenue Cycle Performance

[www.streamlinehealthcare.com](http://www.streamlinehealthcare.com)



**A Holistic View of Healthcare Organizations**

The Risk Strategies National Healthcare Practice delivers specialized expertise and solutions for the healthcare industry, covering Employee Benefits, Managed Care Risk, Reinsurance, and Property, Casualty, and Liability.

With one of the largest teams of healthcare insurance and reinsurance professionals, we provide focused, integrated, and top-tier risk management services, including Performance Bonds and Specific & Aggregate Reinsurance.



**Chuck Newton**  
 Senior Vice President, National Healthcare Practice  
 p 612-766-9783 | m 804-647-8360  
[cnewton@risk-strategies.com](mailto:cnewton@risk-strategies.com)

**Risk Strategies | Part of the Brown & Brown Team**  
 Property & Casualty | Employee Benefits | Private Client Services  
 Consulting | Financial & Wealth

[RiskStrategies.com](http://RiskStrategies.com)

**Your Mission  
 Our Purpose.**

A complete EHR suite for all your behavioral health needs.

Learn more at [NextGen.com/BH](http://NextGen.com/BH)

© 2026 NXGN Management, LLC. All Rights Reserved.  
 NextGen is a registered trademark of NXGN Management, LLC.

TUESDAY, JUNE 9, 2026

# GENERAL SESSION

4:30 P.M. - 5:30 P.M.

## North Carolina's Strategic Response to HR1

Sweeping federal policy changes under HR1 are poised to significantly impact Medicaid, SNAP, and housing supports—requiring swift, coordinated action at the state level. In this general session, Deputy Secretaries from the North Carolina Department of Health and Human Services will outline North Carolina's policy and operational response to these changes, with a focus on preserving access, minimizing disruption, and advancing whole-person care.

Panelists will discuss how the state is leveraging initiatives such as the Rural Health Transformation Program to sustain and strengthen healthcare and behavioral health access, particularly in rural and underserved communities. The session will also examine the policy intersections between healthcare and non-medical drivers of health, and what is at stake for providers, communities, and vulnerable populations. Attendees will leave with a clearer understanding of the state's strategic direction and opportunities to engage in shaping and implementing these efforts.

### OBJECTIVES:

- Identify and analyze the policy implications of HR1 on Medicaid, SNAP, and housing programs in North Carolina.
- Discuss North Carolina's cross-agency strategy to mitigate risk and maintain continuity of services amid federal changes.
- Identify the role of the Rural Health Transformation Program in advancing access and system sustainability in rural communities.
- Review how non-medical drivers of health are being integrated into state policy and program design.
- Define actionable opportunities for stakeholders to influence, align with, and support state-level implementation efforts.

### [VIEW SESSION DETAILS AND SPEAKERS](#)

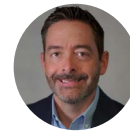
### PANELISTS



**MELANIE BUSH**  
Deputy Secretary for Medicaid,  
NC DHHS



**DEBRA FARRINGTON**  
Deputy Secretary for Health,  
NC DHHS



**MICHAEL LEIGHS**  
Deputy Secretary for Opportunity  
and Well-Being, NC DHHS



**SHERRY BRADSHER** **MODERATOR**  
Managing Principal, CCR Consulting

## THANK YOU I2I FRIENDS



Proud sponsor of the  
**i2i Winter Conference**



We share your  
dedication to improving  
the health of  
our community.

[www.carolinacompletehealth.com](http://www.carolinacompletehealth.com)

WEDNESDAY, JUNE 10, 2026

# CLOSING PLENARY SESSION

11:30 A.M. - 12:30 P.M.

## Looking Ahead — Aligning Around What's Next

As the conference concludes, join leaders from North Carolina's Medicaid Plans for a forward-focused conversation on the trends shaping the future of care. This closing plenary will explore the emerging opportunities and shared challenges Plans are seeing across the system, along with the evolving strategies being considered to respond in more coordinated and consistent ways.

Panelists will reflect on how increased alignment and collaboration can support providers, strengthen partnerships, and improve the experience of individuals and families who rely on the public MH/IDD/SUD system. Expect a big-picture discussion designed to leave attendees with a sense of direction, momentum, and possibility for the road ahead.

### OBJECTIVES:

- Describe key statewide trends influencing Medicaid Plans and the public MH/IDD/SUD system.
- Discuss opportunities for increased alignment and standardization across Plans to address shared system challenges.
- Identify potential implications of emerging Plan strategies for providers, partners, and service users.
- Describe the role of collaboration between Plans and community providers in strengthening access, quality, and outcomes.
- Describe the federal and state changes that will impact North Carolina's public health and human services system.

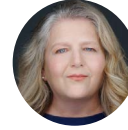
## [VIEW SESSION DETAILS AND SPEAKERS](#)



## TAILORED PLAN PANEL



**JOY FUTRELL**  
Chief Executive Officer,  
Trillium Health Resources



**TRACY HAYES**  
Chief Executive Officer,  
Vaya Health



**LIBBY MCCRAW**  
Chief Executive Officer,  
Partners Health Management



**ROB ROBINSON**  
Chief Executive Officer,  
Alliance Health



**DAVE RICHARD** **MODERATOR**  
Senior Vice President of Government  
Relations, McGuireWoods  
Consulting LLC

## STANDARD PLAN PANELISTS TBA

## THANK YOU i2i FRIENDS

The advertisement for Orbit Billing Solutions features a dark blue background with a target graphic in the center. The target has a yellow bullseye and a red center, with several colorful arrows (red, blue, green, yellow) hitting the target. The Orbit logo is at the top, and the text "STARTING TO THINK THAT CAPTURING REVENUE IS LIKE SHOOTING A MOVING TARGET?" is prominently displayed. Below this, a paragraph describes the company's proven method for increasing revenue. At the bottom, there is a red banner with the text "STOP CHASING A TARGET. WE'VE GOT THIS." and the company's website and phone number.

**Orbit**  
Solutions that work.

**STARTING TO THINK THAT  
CAPTURING REVENUE IS  
LIKE SHOOTING A MOVING  
TARGET?**

Orbit Billing Solutions has a proven method to hit the bullseye for your revenue. Find out how our services pay for themselves with the increase in revenue we bring to your bottom line.

**STOP CHASING A TARGET.  
WE'VE GOT THIS.**

[www.orbitbilling.com](http://www.orbitbilling.com)  
888-440-5798 x704

TUESDAY, JUNE 9, 2026

## CONCURRENT SESSIONS

10:30 A.M. – 12:00 P.M.

- AI - Enabled Automation that Supports Clinical Excellence
- Medicaid Policy Strategies to Strengthen and Expand Your Workforce
- State, Regional and Local Collaborations Creating Predictability and Continuity for 1915(i) Option Stakeholders
- Digital Detection, Human Connection: A Health System's Approach to Suicide Risk Screening
- Peer Operated Crisis Settings and Access Support: What the Data Tells Us
- Federal and State updates to Controlled Substances Regulations and Supporting Technology

[VIEW SESSION DETAILS AND SPEAKERS](#)

AmeriHealth Caritas is proud to support the

# I2I 2026 SPRING CONFERENCE

We join i2i in a shared mission to connect diverse individuals, families and communities to personalized care that builds behavioral health and resilience across all areas and stages of life. Together, we can all help create a future of meaningful, equitable health services.



Learn more about  
AmeriHealth Caritas  
North Carolina's  
focus on quality  
whole-person care.



TUESDAY, JUNE 9, 2026

# LIVED IN EXPERIENCES COLLABORATIVE: STORIES TO SOLUTIONS LUNCH FORUM

12:00 P.M. – 1:00 P.M.

The i2i Center is pleased to, once again, partner with **AKALAKA** to gather individuals with lived experience to translate shared stories into catalysts for change. In this lunch-and-learn forum, participants will collectively identify important current issues and weave their lived experience into actionable recommendations for policy leaders. AKALAKA is grateful to collaborate with Inclusion Seekers (formerly known as Starfire) which is traveling from Cincinnati, Ohio for this event.

Join us for the debut of AKALAKA's first cohort of Certified Peer Facilitators-

local leaders who have transformed their lived experience with disability and care into formal support and guidance for those still lost in the wilderness of disability services.

Grab your lunch and share your story!

*This session is reserved for individuals with lived experience, self-advocates, family members, and care partners - because this conversation belongs to you.*

AKALAKA connects people caregiving for disabled family and friends with the peer-powered network needed to succeed at home and in our communities of choice.

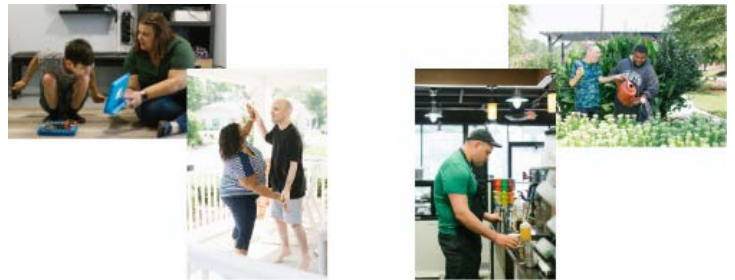
Lived experience or not, if you would like to connect with, learn more, or are interested in future opportunities with AKALAKA, visit <https://hi.akalaka.org/> and follow on LinkedIn, Facebook, and Instagram.

## [VIEW SESSION DETAILS AND SPEAKERS](#)



*Self-advocates, family members, and care partners belong at the center of conversations about policy that affects them most.*

## THANK YOU i2i FRIEND



*For nearly half a century, we have valued the uniqueness of each individual with Autism Spectrum Disorder and seek to incorporate their strengths, abilities, values, interests and choices in the planning and provision of services.*

We can't wait to connect and collaborate with you!

[ghautismsupports.org](https://ghautismsupports.org)

TUESDAY, JUNE 9, 2026

# SPARKING INNOVATION

1:30 P.M. – 2:30 P.M.

- Understanding the Policy Priorities of the Tailored Plans in 2026
- Building the Leadership & Culture Backbone: How to Aligned Your Management Team Across Systems
- AdvaNce Health Together: Strengthening Health Through Collaboration
- I/DD Peer Mentor Training Program: Purpose, Planning, and Outcome
- Evolution and the Integrated Therapeutic Community Model for Co-Occurring Treatment
- Building Early Behavioral Health Supports in Early Childhood Settings

[VIEW SESSION DETAILS AND SPEAKERS](#)

## THANK YOU i2i FRIENDS

**Amivie**

**Proud Partner of the i2i Conference**

At Amivie, our name means a friend for life—and that's exactly what we aim to be.

We exist to serve seniors, veterans, and individuals with I/DD, helping them achieve their best health and fullest lives. We connect the right team of professionals with those in their community who need support—delivered with compassion and convenience.

Best Health. Fullest Lives.

**Contact Us:**

800-700-0008

amivie.com  
or scan the QR code

**COMMUNITY ALTERNATIVES OF NORTH CAROLINA**  
A RESCARE® COMMUNITY LIVING AGENCY

"Helping individuals with intellectual & developmental disabilities live their best lives."

**Services Provided within North Carolina:**

- Alternative Family Living (AFL).
- Intermediate Care Facilities (ICF).
- Waiver Group Homes.
- Periodic Services & Supported Living.
- Day Programs.
- Tailored Care Management.
- Employment Opportunities within all of our NC Operations.

**SCAN ME!**

**RES CARE**  
COMMUNITY LIVING

# THE NEW STANDARD FOR VALUE-BASED CARE. NOW LIVE AT I2I.

## Stop chasing compliance. Start leading it.

Element provides the definitive ecosystem required to transition to value-based care without operational friction.

- Eliminate redundant administrative cycles.
- Ensure zero-friction, audit-ready compliance.
- Close clinical care gaps before they impact margins.
- Capture maximum value-based reimbursement.



ELEMENT BY ARKHE

**i2i** 2026 SPRING  
CONFERENCE

June 9-10, 2026

Raleigh, NC

EXPERIENCE THE INFRASTRUCTURE.

[Visit Our Booth](#)



SCAN THE QR CODE TO SKIP THE LINE AND BOOK A 1:1 DEMO WITH THE ELEMENT TEAM.



## Molina Healthcare is a proud sponsor of i2i's Spring Conference!

Thank you for your dedication to integrated, whole person care and for making a positive impact on the lives of so many!



## THANK YOU i2i FRIENDS



**OUR FOCUS IS ON YOUR SUCCESS.**



Throughout North Carolina and the US, clients have trusted us as their "go-to" for Health and Human Services strategy, program design, business development, revenue enhancement, policy, advocacy, and much more.

[www.ccrconsultinggroup.com](http://www.ccrconsultinggroup.com)



We offer:

- Enteral Tube feeding (Formulas, pumps, supplies)
- Oral Nutrition (Supplements and thickeners)
- Incontinence (Diapers, pull-ups, bed pads)
- Oral Suction (Pumps, canisters, tubing)
- Ostomy (Wafers, bags, supplies)
- Urological (I/O and straight caths and supplies)
- Pulse Ox, Floor Scales, Blood Pressure Monitors
- Nebulizers
- Registered Dietitian
- 24/7 On Call support
- Experienced Billing Department
- Medicare/NC Medicaid/ Managed Care
- Commercial insurances, Private Pay, Agencies/CAP
- Competitive Self pay pricing

All services are based on insurance coverage and eligibility.

[www.wincare.com](http://www.wincare.com)

**Phone: 1-800-850-0483 \*\* Fax 1-216-755-8614**

TUESDAY, JUNE 9, 2026

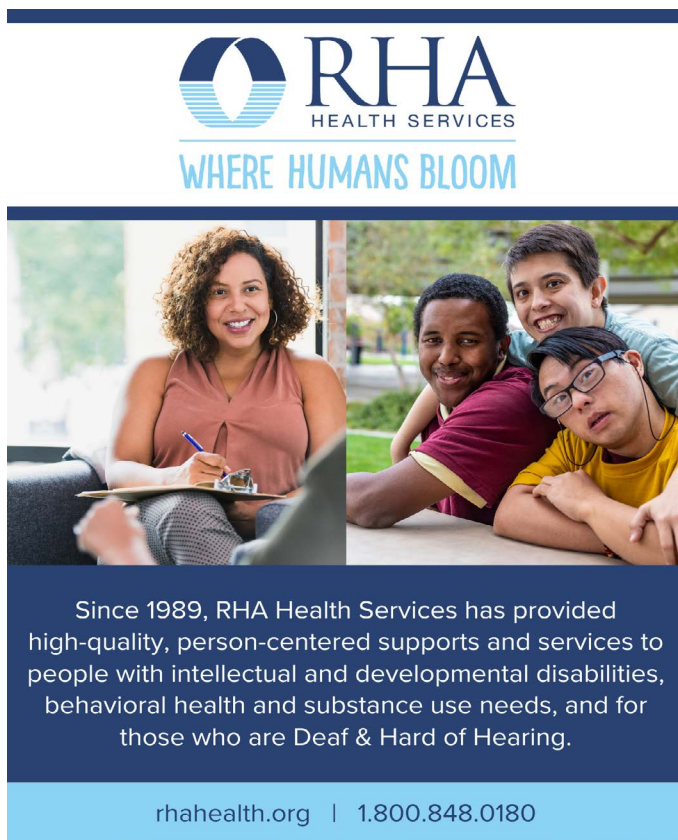
# SPARKING INNOVATION

3:00 P.M. - 4:00 P.M.

- **Advancing Early Psychosis Treatment: Building Effective FEP Programs within Integrated Health Setting**
- **The Science Behind Workforce Agility and Resilience—and How Leaders Can Put It into Practice**
- **Family-Led, Clinician-Supported: Using Technology and Community Supports to Improve Behavioral Health Outcomes for Children While Reducing System Strain**
- **Rooted in Community: Civic Power as a Path to Better Disability Outcomes**
- **Using Core Values to Inform True Whole Person Care: Talk About Value Add!**
- **Professionalizing Placement: Impact and Outcomes of the Treatment Parent Specialist Model**

[VIEW SESSION DETAILS AND SPEAKERS](#)

## THANK YOU i2i FRIENDS



**RHA**  
HEALTH SERVICES  
WHERE HUMANS BLOOM

Since 1989, RHA Health Services has provided high-quality, person-centered supports and services to people with intellectual and developmental disabilities, behavioral health and substance use needs, and for those who are Deaf & Hard of Hearing.

[rhahealth.org](http://rhahealth.org) | 1.800.848.0180



**Helping people  
live healthier lives**

UnitedHealthcare® is proud to sponsor the i2i Center for Integrative Health Winter Conference



WEDNESDAY, JUNE 10, 2026

# CONCURRENT SESSIONS

9:30 A.M. – 11:00 A.M.

- Leading in Uncertain Times: Organizational Challenges and Opportunities Under HR1 (OBBBA) and Other Funding Variables
- Effective Leadership Development: A Practical Guide for a Remote Workforce
- From Launch to Scale: Operationalizing Tailored Care Management in North Carolina
- Connected Care: Leveraging People, Partnerships, and Technology in Behavioral Health
- Beyond Behavioral Health: Strengthening ACTT Through PCS Integration and Whole Person Care
- Reimagining the Waitlist
- The NCMedHelp Project: Helping Medicaid Beneficiaries

[VIEW SESSION DETAILS AND SPEAKERS](#)

## THANK YOU i2i FRIENDS



When you lead with compassion,  
**hope follows.**

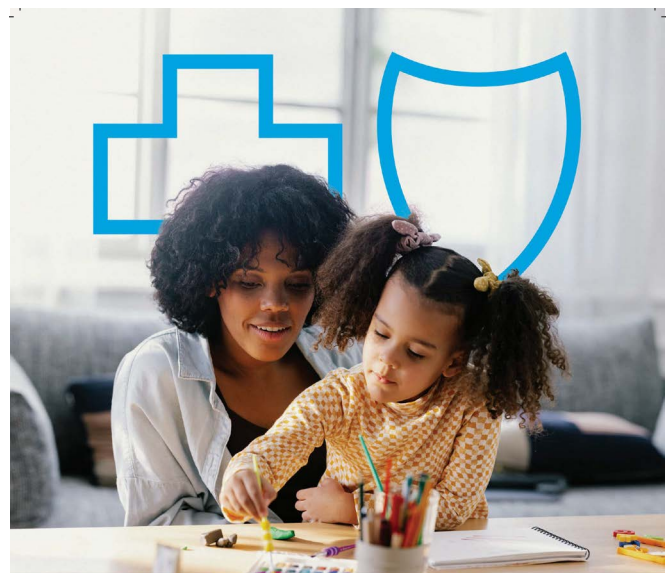
For more than 65 years, Monarch has been a trusted resource for people with mental illness, substance use disorders, intellectual and developmental disabilities, and traumatic brain injuries.

With services offered statewide across North Carolina and Rhode Island, we are committed to providing high-quality care and support to the individuals and families who need us most.

MonarchNC.org (866) 272-7826



Monarch is accredited by and has earned The Joint Commission's Gold Seal of Approval.



Proud Sponsor



Healthy Blue is a Medicaid plan offered by Blue Cross and Blue Shield of North Carolina. Blue Cross and Blue Shield of North Carolina is an independent licensee of the Blue Cross and Blue Shield Association. © Marks of the Blue Cross and Blue Shield Association. 1032099NCPENHBL 03/21