



NC DEPARTMENT OF
**HEALTH AND
HUMAN SERVICES**

Ginger Yarbrough

Advancing the Olmstead Plan

One Plan, Many Partners

Last updated June 2025

- **Overview of Olmstead and the NC Olmstead Plan**
- **Q & A Panels:**
 - **People with Lived Experience**
 - **Providers Supporting Olmstead**
 - **NC DHHS Leaders in Olmstead**

WHAT IS THE OLMSTEAD DECISION?

Ginger Yarbrough

- In 1999, the U.S. Supreme Court ruled in *Olmstead v. L.C.* that people with disabilities should be able to live in the community — not just in institutions or hospitals.
- States are required to provide community-based services when:
 - Such services are appropriate;
 - The affected individuals do not oppose community-based treatment; and
 - The placement can be reasonably accommodated, considering the state's resources and the needs of others with disabilities.

WHY IS THE OLMSTEAD DECISION IMPORTANT?

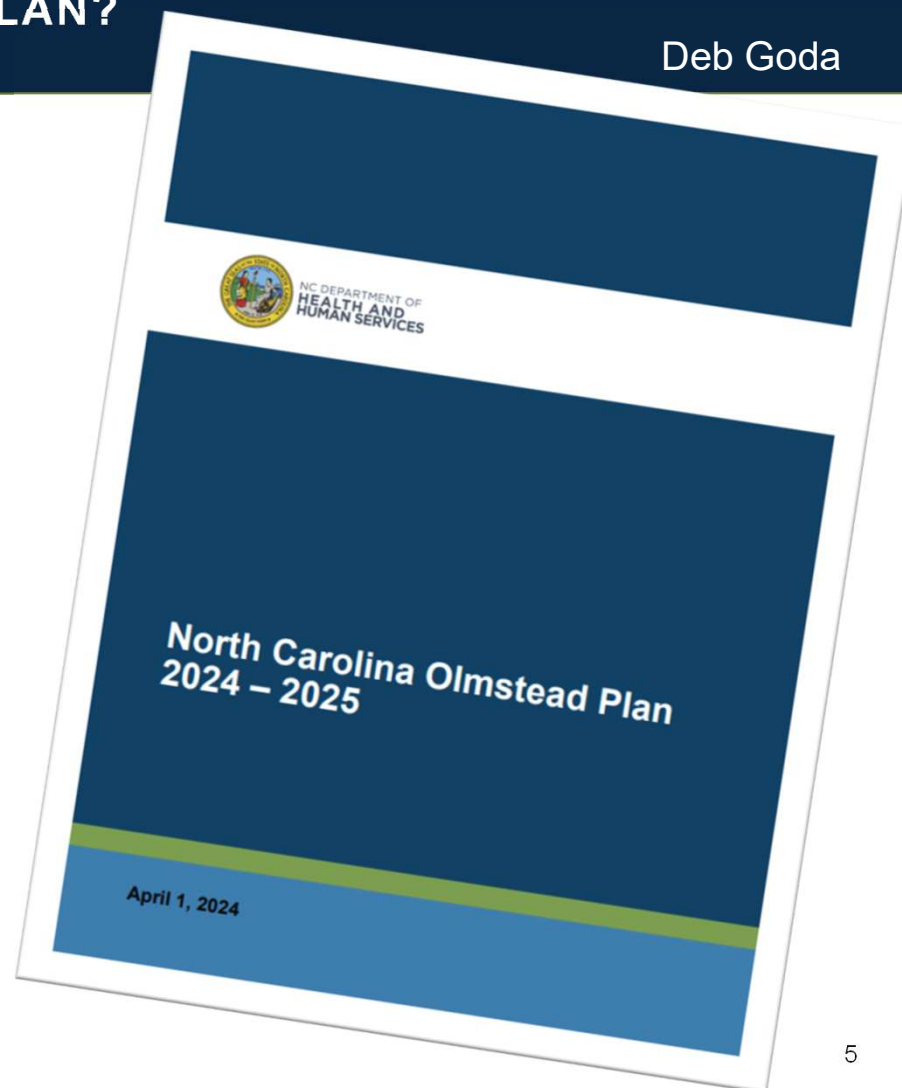
Ginger Yarbrough

- It gives people with disabilities the right to choose where they live.
- States must help people live in homes and neighborhoods, not just large group settings.
- It protects the civil rights of people with disabilities.

WHAT IS THE NORTH CAROLINA OLMSTEAD PLAN?

Deb Goda

- It's a plan that shows how North Carolina helps people with disabilities to live where they want and be part of their communities.
- The plan includes housing, jobs, transportation, and more.
- It was made with help from people, families, and groups who care.



What does the Olmstead Plan focus on?

The Olmstead Plan focuses on how the State is going to support people with disabilities. This includes things like:

- helping people to get services in their communities instead of institutions
- helping people to get jobs or post high school education
- improving the Direct Support Professional (DSP) workforce



HOW DO WE WORK TOGETHER?

Deb Goda

- People with disabilities, their families, and other groups help make the plan better.
- Services providers and Tailored Plans are important partners in making the plan work.
- The State listens to feedback and ideas.
- Working together helps everyone feel included and supported.

What is Transitions to Community Living (TCL)?

- It helps people with mental illness move from institutions into homes in the community.
- It gives support like housing, job help, and care in the community.
- It started because of a 2012 agreement with the US Department of Justice.



Deb Goda



NC DEPARTMENT OF
HEALTH AND
HUMAN SERVICES



NC DEPARTMENT OF
HEALTH AND
HUMAN SERVICES

What is Inclusion Connects?

- It helps people with intellectual and developmental disabilities (I/DD) get services.
- It gives information about housing, work, and other community supports.
- It helps people live and be part of their communities.



Ginger Yarbrough

What is Inclusion Works?

- Everyone has the right to work if they want to.
- Inclusion Works helps people with I/DD get jobs.
- It helps them find and keep jobs in their community.
- People get paid fair wages and work with others in the community.



NC DEPARTMENT OF
HEALTH AND
HUMAN SERVICES



Ging

HOW DO WE KNOW THE OLMSTEAD PLAN IS WORKING?

Deb Goda

- We look to see what is working or not. Like seeing if people are moving into their own homes and getting jobs.
- We hold advisory committees and seek your feedback and input.
- We use information and feedback to make things better for the future.



NC DEPARTMENT OF
**HEALTH AND
HUMAN SERVICES**
Division of Mental Health,
Developmental Disabilities and
Substance Use Services

Stay Connected with DMHDDSUS



Join our Side by Side
Webinars



Join our
Mailing List



NC DEPARTMENT OF
**HEALTH AND
HUMAN SERVICES**

Advancing the Olmstead Plan

One Plan, Many Partners



