

NC DEPARTMENT OF
**HEALTH AND
HUMAN SERVICES**

OUTCOMES AND IMPACT: EMPLOYMENT AND COMMUNITY INCLUSION

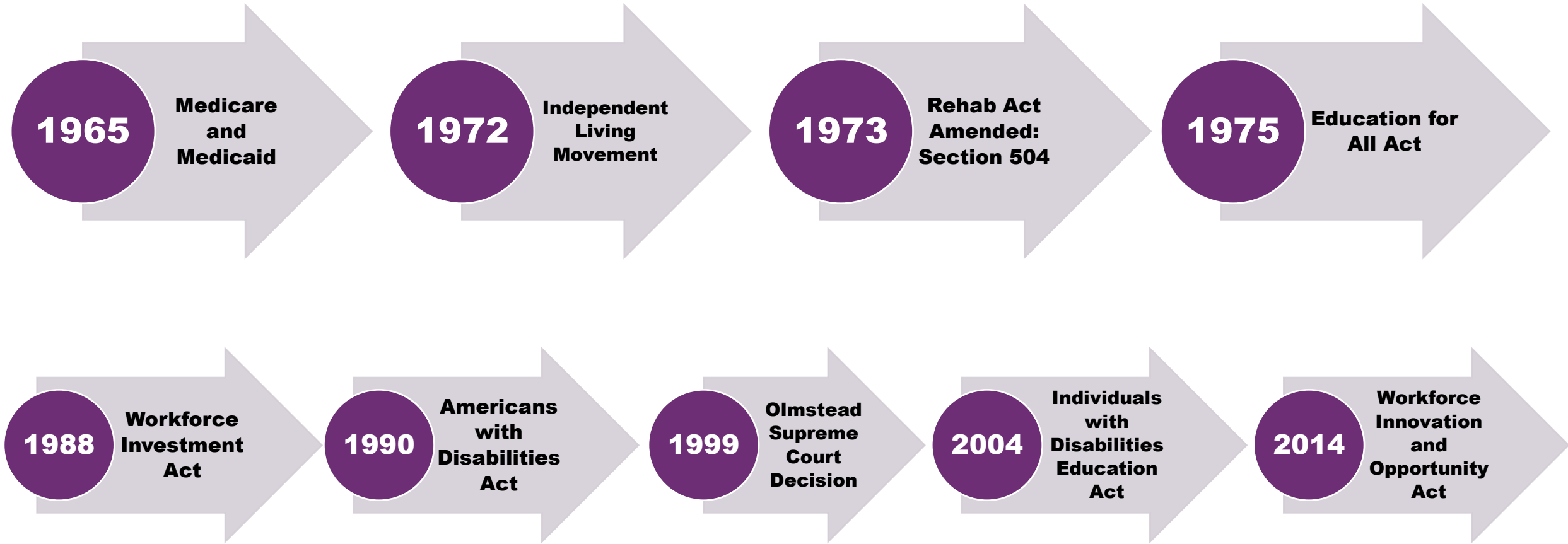
Chris Egan

Assistant Secretary for Employment and Inclusion, NCDHHS

December 6, 2023



IMPORTANT MILESTONES ON PATH TOWARDS ACHIEVING DISABILITY INCLUSION



CHANGING PERSPECTIVES

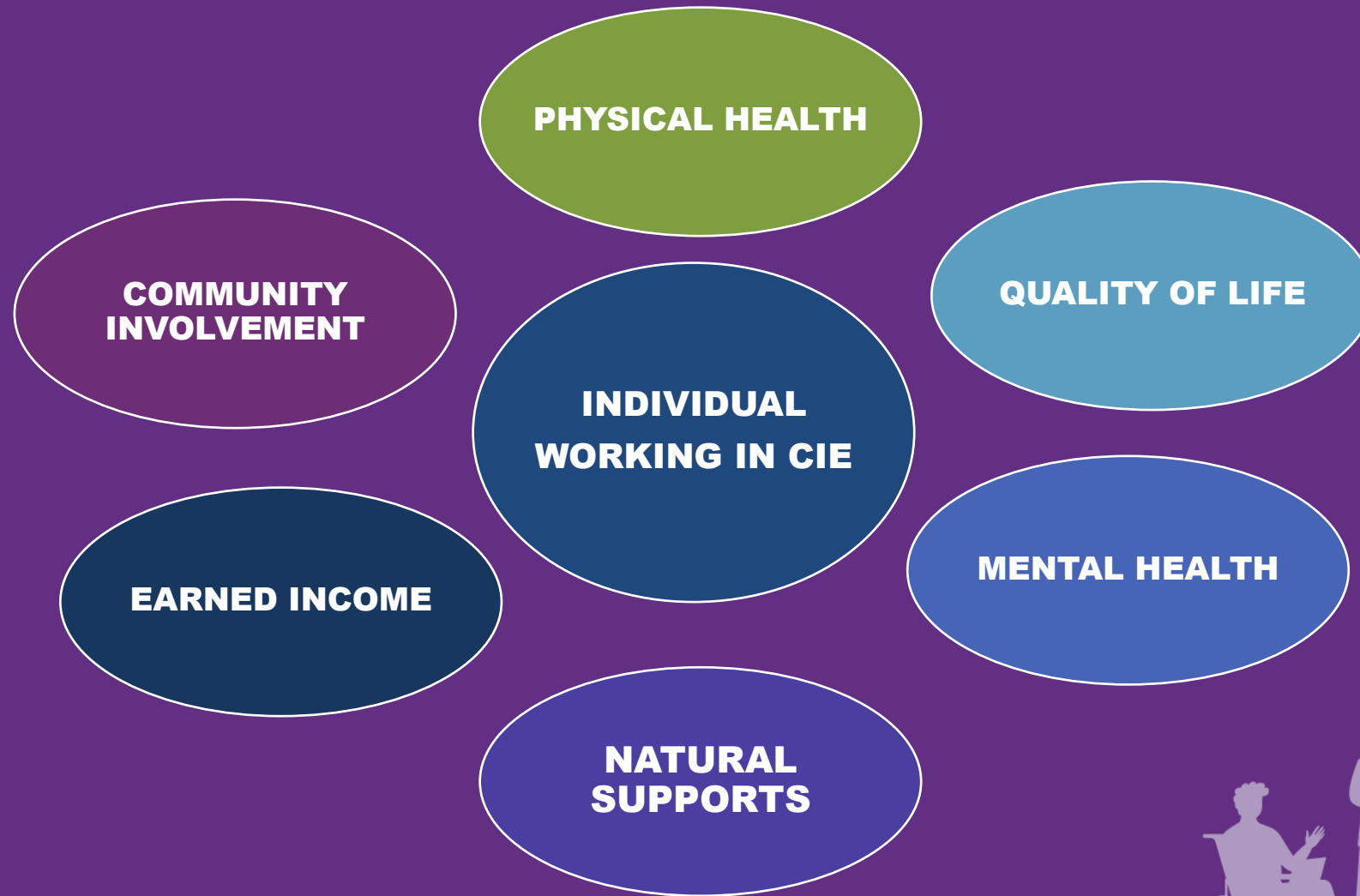
Medical Model (deficit-based)

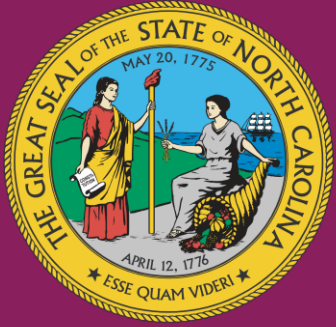
- Disability is a personal flaw/deficit (low expectations)
- Disability can be cured
- Disability makes people dependent on caregivers/professionals
- Environment/culture creates barriers for people w/disabilities

Whole Person (strengths-based)

- Society/communities should provide equal access, regardless of disability
- Disability is natural, all people have value and can contribute (high expectations)
- With informed choice, supported decision-making and accommodations, individual with a disability is in control of their own life

IMPACT OF CIE ON OTHER LIFE OUTCOMES





NC DEPARTMENT OF
**HEALTH AND
HUMAN SERVICES**

Increasing Opportunities for CIE: The Role of Vocational Rehabilitation

Kathie Smith,

Director, Division of Vocational Rehabilitation Services

December 6, 2023



Agenda

- **Statewide Network of I/DD Liaisons and I/DD Outreach**
- **Supported Internships**
- **Spark (NCSWTCIE)**



Individual Perspective: Brittany

Meet Brittany

Individual Perspective: Brendon



Individual Perspective: Darcy

